

# HORIZONTAL SLIDING SECONDARY

## The Product

The Horizontal Slider is undoubtedly the most frequently used type of secondary glazing. Its uses are therefore widespread, being applied to high rise or low-level commercial properties, historic buildings as well as all kinds of domestic dwellings. The system provides sensitive solutions to the problems created by noise and sound pollution.



## How it works

Generally available in two, three or four panelled versions, the sashes are fitted with brass rollers, ensuring the smoothest sliding action. Twin brush seals provide excellent high sealing efficiency. This has been scientifically proven to eliminate draughts, increase thermal insulation and give greater improvements to the security of the primary windows. The security issue is further enhanced with the use of the latest locks and handles.

## Technical Specifications

### Hardwood Sub-Frames

#### SIZES

21mm x 45mm Standard  
21mm x 62mm Reveal fix  
30mm x 30mm Bay Adaptor

### Hardwood or PVCU Trims

#### SIZES

6mm x 21mm S.B.N.  
6mm x 27mm S.B.N.  
6mm x 37mm S.B.N.  
6mm x 44mm S.B.N.  
6mm x 55mm S.B.N.  
6mm x 75mm S.B.N.  
6mm x 15mm D.B.N.  
6mm x 33mm D.B.N.  
6mm x 43mm D.B.N.

## Aluminium

Aluminium alloy extruded to exclusive designs from 6063T6 alloy to BS1474.

## Finishes

Natural anodising to AA5 - BS 3987 Polyester Powder to BS 6496. Stock finishes in EP white/Van Dyke brown. High gloss finish. 60 microns. Other RAL colours upon request.

## Glazing

In accordance with BS6206 for Safety Glazing requirements. Choices of 4mm or 6mm Clear Float, 4mm or 6mm Toughened, 6.4mm Laminated or Laminated Acoustic Glass for Noise Reduction as well as Low E glass for Thermal Efficiency.

## Maximum Sizes

#### Width x Height

2500mm x 2200mm Two Pane Horizontal Slider  
3750mm x 2200mm Three Pane Horizontal Sliders  
5000mm x 2200mm Four Pane Horizontal Sliders

An up-rated specification can be obtained upon application to accommodate larger sizes.

## Weather Pile

Polypropylene draught strip to BS 7386.

## Gasket

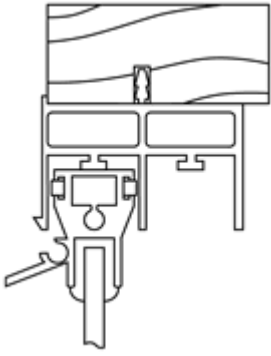
All gaskets extruded to BS 2782, standard colour white, black 4mm gasket also available.

## Optional Extras

Chubb Locks, Budget Locks, Barrel Locks, Shoot Bolt Locks, Restricted Opening Locks, Arched Heads, Gothic Heads,

Stacking Units

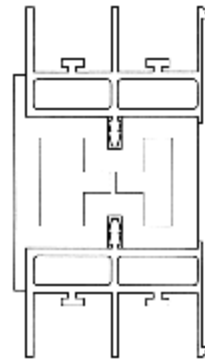
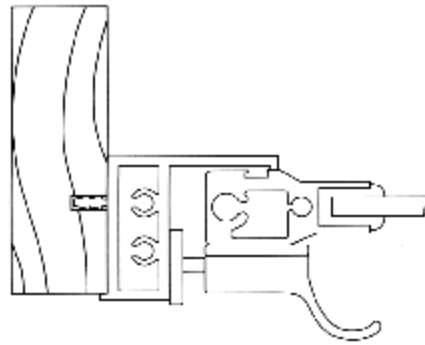
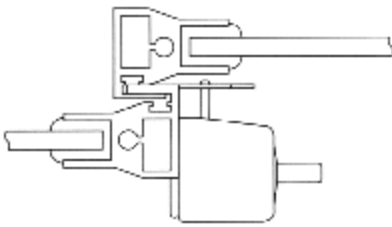
Can be coupled with other products in our range using our extensive range of interlocks.



*Elevations*

**Optional Locks**

**Coupling Section**



*Chubb*

*Carriage*

**Bay Section**

**Support**

